

JULY 2015

TRAILS, PARKS, & OPEN SPACE IMPROVEMENTS

PLANT PALETTE

TODD CREEK VILLAGE PARK AND RECREATION DISTRICT



TODD CREEK VILLAGE
PARK AND RECREATION DISTRICT



SECTION 1: Deciduous & Evergreen Trees

<u>Botanical Name:</u>	<u>Common Name:</u>	<u>Water Use:</u>	<u>Page:</u>
<i>Acer grandidentatum</i>	Big Tooth Maple	Low	4
<i>Acer tatarian</i> 'Hot Wings'	Hot Wings Maple	Low	4
<i>Amelanchier canadensis</i>	Shadblow Serviceberry	Low	4
<i>Catalpa speciosa</i> *	Northern/Western Catalpa	Low	5
<i>Crataegus viridis</i> 'Winter King' *	Winter King Hawthorn	Low	5
<i>Gleditsia triacanthos inermis</i> 'Imperial' *	Imperial Honeylocust	Low	5
<i>Gymnocladus dioicus</i> 'Espresso'	Seedless Kentucky Coffeetree	Low	6
<i>Juniperus scopulorum</i>	Cologreen Juniper	Very Low	6
<i>Juniperus scopulorum</i>	Wichita Blue Juniper	Very Low	6
<i>Malus</i> 'Spring Snow' *	Spring Snow Crabapple	Medium	7
<i>Picea pungens</i> 'Baby Blue Eyes' *	Baby Blue Eyes Spruce	Medium	7
<i>Pinus edulis</i> *	Pinyon Pine	Very Low	7
<i>Pinus mugo</i> 'Big Tuna'	Big Tuna Mugo Pine	Low	8
<i>Pinus nigra</i> *	Austrian Pine	Low	8
<i>Quercus macrocarpa</i>	Bur Oak	Low	8
<i>Syringa reticulata</i>	Ivory Silk Lilac	Low	9
<i>Tilia cordata</i> 'Greenspire' *	Greenspire Linden	Medium	9

SECTION 2: Deciduous & Evergreen Shrubs

<u>Botanical Name:</u>	<u>Common Name:</u>	<u>Water Use:</u>	<u>Page:</u>
<i>Amorpha canescens</i>	Leadplant	Very Low	10
<i>Berberis thunbergii</i> 'Atropurpurea'	Redleaf Japanese Barberry	Low	10
<i>Chamaebatiaria millefolium</i>	Fernbush	Very Low	10
<i>Chrysothamnus nauseosus</i> sp <i>albicaulis</i>	Tall Blue Rabbitbrush	Very Low	11
<i>Fallugia paradoxa</i>	Apache Plume	Very Low	11
<i>Juniperus sabina</i>	Buffalo Juniper	Low	11
<i>Juniperus x media</i> 'Old Gold'	Old Gold Juniper	Low	12
<i>Juniperus x media</i> 'Sea Green'	Sea Green Juniper	Low	12
<i>Ligustrum x vacaryi</i>	Golden Vicary Privet	Medium	12
<i>Mahonia aquifolium compacta</i>	Compact Oregon Grape Holly	Low	13
<i>Perovskia atriplicifolia</i>	Russian Sage	Very Low	13
<i>Physocarpus opulifolius</i> 'Dart's Gold'	Dart's Gold Ninebark	Low	13

SECTION 2: Deciduous & Evergreen Shrubs (continued)

<u>Botanical Name:</u>	<u>Common Name:</u>	<u>Water Use:</u>	<u>Page:</u>
Pinus Mugo 'Slowmound'	Slowmound Mugo Pine	Low	14
Potentilla fruticosa 'Gold Finger'	Gold Finger Potentilla	Low	14
Prunus besseyi 'Pawnee Buttes'	Creeping Western Sand Cherry	Low	14
Prunus virginiana melanocarpa	Native Chokecherry	Low	15
Rhus aromatica 'Grow-Low'	Fragrant Dwarf Sumac	Low	15
Ribes alpinum	Alpine Currant	Low	15
Rosa Climbing 'William Baffin'	William Baffin Climbing Rose	Low	16
Spiraea japonica 'Limemound'	Limemound Spirea	Medium	16
Spiraea nipponica 'Snowmound'	Snowmound Spirea	Medium	16
Syringa patula 'Miss Kim'	Miss Kim Dwarf Lilac	Very Low	17
Syringa vulgaris	Common Purple Lilac	Low	17

SECTION 3: Perennials & Ornamental Grasses

<u>Botanical Name:</u>	<u>Common Name:</u>	<u>Water Use:</u>	<u>Page:</u>
Achillea 'Moonshine'	Moonshine Yarrow	Low	18
Calamagrostis acutiflora 'Karl Foerster'	Feather Reed Grass	Low	18
Cerastium tomentosum	Snow-In-Summer	Low	18
Echinacea purpurpea	Purple Coneflower	Low	19
Erianthus ravennae	Hardy Plume Grass	Low	19
Euonymus fortunei 'Coloratus'	Purpleleaf Wintercreeper	Low	19
Gaillardia x grandiflora	Native Blanket Flower	Low	20
Hemerocallis 'Stella de Oro'	Dwarf Gold Daylily	Low	20
Mahonia repens	Creeping Colorado Holly	Low	20
Miscanthus sinensis 'Morning Light'	Morning Light Maiden Grass	Low	21
Rudbeckia fulgida 'Goldstrum'	Black-Eyed Susan	Low	21
Salvia pachyphylla	Mojave Sage	Low	21
Salvia nemorosa 'May Night'	May Night Salvia	Low	22
Sporobolus heterolepis	Prairie Dropseed Grass	Low	22

Notes:

* Trees with an asterisk indicate a species also included in the Section 04-16-12 Recommended Plant Materials of the Adams County Development Standards and Regulations.

** All landscape materials proposed within this document conform to Section 04-16-03 and 04 of the Adams County Development Standards and Regulations.

*** These species selections are intended as a design template for areas within HOA tracts and outlots of the Todd Creek Village Trails, Parks, and Open Space jurisdiction and for general residential use.



Botanical Name: *Acer grandidentatum*
 Common Name: **Big Tooth Maple**
 Mature Height: 20-30'
 Mature Spread: 20-30'
 Exposure: Sun
 Water Requirement: Low
 Features: Attractive foliage
 Flower Season: Spring
 Growth Rate: Moderate



Botanical Name: *Acer tatarian 'Hot Wings'*
 Common Name: **Hot Wings Maple**
 Mature Height: 15-20'
 Mature Spread: 15-20'
 Exposure: Adaptable
 Water Requirement: Low
 Features: Attractive foliage
 Flower Season: Spring
 Growth Rate: Moderate



Botanical Name: *Amelanchier canadensis*
 Common Name: **Shadblow Serviceberry**
 Mature Height: 15-20'
 Mature Spread: 15-20'
 Exposure: Sun
 Water Requirement: Low
 Features: Showy flowers
 Flower Season: Spring
 Growth Rate: Moderate

Botanical Name: *Catalpa speciosa*
 Common Name: **Northern/Western Catalpa**
 Mature Height: 40-60'
 Mature Spread: 30-50'
 Exposure: Sun
 Water Requirement: Low
 Features: Attractive foliage, showy flowers
 Flower Season: Spring
 Growth Rate: Moderate



Botanical Name: *Crataegus viridis* 'Winter King'
 Common Name: **Winter King Hawthorn**
 Mature Height: 15-20'
 Mature Spread: 15-20'
 Exposure: Sun
 Water Requirement: Low
 Features: Showy flowers
 Flower Season: Spring
 Growth Rate: Moderate



Botanical Name: *Gleditsia triacanthos inermis* 'Imperial'
 Common Name: **Imperial Honeylocust**
 Mature Height: 30-40'
 Mature Spread: 30-40'
 Exposure: Sun
 Water Requirement: Low
 Features: Fragrant flowers
 Flower Season: N/A
 Growth Rate: Fast





Botanical Name: *Gymnocladus dioica* 'Expresso'
 Common Name: **Seedless Kentucky Coffeetree**
 Mature Height: 50-60'
 Mature Spread: 40-50'
 Exposure: Sun
 Water Requirement: Low
 Features: Attractive foliage
 Flower Season: Spring
 Growth Rate: Moderate



Botanical Name: *Juniperus scopulorum*
 Common Name: **Cologreen Juniper**
 Mature Height: 15-20'
 Mature Spread: 4-6'
 Exposure: Sun
 Water Requirement: Very Low
 Features: Attractive foliage, evergreen
 Flower Season: N/A
 Growth Rate: Moderate



Botanical Name: *Juniperus scopulorum*
 Common Name: **Wichita Blue Juniper**
 Mature Height: 15-20'
 Mature Spread: 4-8'
 Exposure: Sun
 Water Requirement: Very Low
 Features: Blue foliage, evergreen
 Flower Season: N/A
 Growth Rate: Moderate

Botanical Name: *Malus 'Spring Snow'*
Common Name: **Spring Snow Crabapple**
Mature Height: 20-25'
Mature Spread: 20-25'
Exposure: Sun
Water Requirement: Medium
Features: Showy flowers, fragrant flowers
Flower Season: Spring
Growth Rate: Moderate



Botanical Name: *Picea pungens 'Baby Blue Eyes'*
Common Name: **Baby Blue Eyes Spruce**
Mature Height: 20-30'
Mature Spread: 10-15'
Exposure: Sun
Water Requirement: Medium
Features: Blue foliage, evergreen
Flower Season: N/A
Growth Rate: Moderate



Botanical Name: *Pinus edulis*
Common Name: **Pinyon Pine**
Mature Height: 20-30'
Mature Spread: 10-20'
Exposure: Sun / Part Shade
Water Requirement: Very Low
Features: Evergreen
Flower Season: N/A
Growth Rate: Slow





Botanical Name: *Pinus mugo* 'Big Tuna'
 Common Name: **Big Tuna Mugo Pine**
 Mature Height: 6-8'
 Mature Spread: 5-6'
 Exposure: Sun / Part Shade
 Water Requirement: Low
 Features: Evergreen
 Flower Season: N/A
 Growth Rate: Moderate



Botanical Name: *Pinus nigra*
 Common Name: **Austrian Pine**
 Mature Height: 40-60'
 Mature Spread: 30-40'
 Exposure: Sun
 Water Requirement: Low
 Features: Evergreen
 Flower Season: N/A
 Growth Rate: Moderate



Botanical Name: *Quercus macrocarpa*
 Common Name: **Bur Oak**
 Mature Height: 50-80'
 Mature Spread: 50-80'
 Exposure: Sun
 Water Requirement: Low
 Features: Attractive foliage
 Flower Season: N/A
 Growth Rate: Moderate

Botanical Name: *Syringa reticulata*
Common Name: **Ivory Silk Lilac**
Mature Height: 15-25'
Mature Spread: 15-20'
Exposure: Sun / Part Shade
Water Requirement: Low
Features: Showy flowers, winter interest
Flower Season: Late Spring
Growth Rate: Slow



Botanical Name: *Tilia cordata* 'Greenspire'
Common Name: **Greenspire Linden**
Mature Height: 30-40'
Mature Spread: 25-35'
Exposure: Sun
Water Requirement: Medium
Features: Fragrant flowers
Flower Season: Early Summer
Growth Rate: Moderate





Botanical Name: *Amorpha canescens*
Common Name: **Leadplant**
Mature Height: 2-4'
Mature Spread: 2-4'
Exposure: Sun
Water Requirement: Very Low
Features: Showy flowers
Flower Season: Summer
Growth Rate: Moderate



Botanical Name: *Berberis thunbergii* 'Atropurpurea'
Common Name: **Redleaf Japanese Barberry**
Mature Height: 4-6'
Mature Spread: 4-6'
Exposure: Sun / Part Shade
Water Requirement: Low
Features: Attractive foliage
Flower Season: Spring
Growth Rate: Moderate



Botanical Name: *Chamaebatiaria millefolium*
Common Name: **Fernbush**
Mature Height: 3-5'
Mature Spread: 3-6'
Exposure: Sun
Water Requirement: Very Low
Features: Attractive foliage
Flower Season: Spring
Growth Rate: Moderate

Botanical Name: *Chrysothamnus nauseosus* ssp *albicaulis*
 Common Name: **Tall Blue Rabbitbrush**
 Mature Height: 2-6'
 Mature Spread: 2-6'
 Exposure: Sun
 Water Requirement: Very Low
 Features: Showy flowers, winter interest
 Flower Season: Summer / Fall
 Growth Rate: Moderate



Botanical Name: *Fallugia paradoxa*
 Common Name: **Apache Plume**
 Mature Height: 3-6'
 Mature Spread: 3-6'
 Exposure: Sun
 Water Requirement: Very Low
 Features: Winter interest
 Flower Season: Early Summer
 Growth Rate: Moderate



Botanical Name: *Juniperus sabina*
 Common Name: **Buffalo Juniper**
 Mature Height: 12-18"
 Mature Spread: 6-8'
 Exposure: Sun / Part Shade
 Water Requirement: Low
 Features: Evergreen
 Flower Season: N/A
 Growth Rate: Moderate





Botanical Name: *Juniperus x media* 'Old Gold'
 Common Name: **Old Gold Juniper**
 Mature Height: 3-4'
 Mature Spread: 4-6'
 Exposure: Sun
 Water Requirement: Low
 Features: Evergreen
 Flower Season: N/A
 Growth Rate: Moderate



Botanical Name: *Juniperus x media* 'Sea Green'
 Common Name: **Sea Green Juniper**
 Mature Height: 5-6'
 Mature Spread: 6-8'
 Exposure: Sun
 Water Requirement: Low
 Features: Evergreen
 Flower Season: N/A
 Growth Rate: Moderate



Botanical Name: *Ligustrum x vacaryi*
 Common Name: **Golden Vicary Privet**
 Mature Height: 4-6'
 Mature Spread: 3-4'
 Exposure: Sun
 Water Requirement: Medium
 Features: Showy flowers, golden yellow foliage
 Flower Season: Early Summer
 Growth Rate: Moderate

Botanical Name: *Mahonia aquifolium compacta*
Common Name: **Compact Oregon Grape Holly**
Mature Height: 2-3'
Mature Spread: 2-3'
Exposure: Shade / Part Shade
Water Requirement: Low
Features: Showy flowers, evergreen
Flower Season: Spring
Growth Rate: Slow



Botanical Name: *Perovskia atriplicifolia*
Common Name: **Russian Sage**
Mature Height: 3-4'
Mature Spread: 3-4'
Exposure: Sun
Water Requirement: Very Low
Features: Showy flowers
Flower Season: Summer
Growth Rate: Fast



Botanical Name: *Physocarpus opulifolius 'Dart's Gold'*
Common Name: **Dart's Gold Ninebark**
Mature Height: 3-5'
Mature Spread: 3-5'
Exposure: Sun
Water Requirement: Low
Features: Showy flowers, winter interest
Flower Season: Spring
Growth Rate: Moderate





Botanical Name: *Pinus Mugo* 'Slowmound'
 Common Name: **Slowmound Mugo Pine**
 Mature Height: 3-5'
 Mature Spread: 5-7'
 Exposure: Sun / Part Shade
 Water Requirement: Low
 Features: Evergreen
 Flower Season: N/A
 Growth Rate: Slow



Botanical Name: *Potentilla fruticosa* 'Gold Finger'
 Common Name: **Gold Finger Potentilla**
 Mature Height: 2-3'
 Mature Spread: 3-4'
 Exposure: Sun
 Water Requirement: Low
 Features: Long flowering season
 Flower Season: Summer
 Growth Rate: Moderate



Botanical Name: *Prunus besseyi* 'Pawnee Buttes'
 Common Name: **Creeping Western Sand Cherry**
 Mature Height: 15-30"
 Mature Spread: 4-6'
 Exposure: Sun
 Water Requirement: Low
 Features: Showy flowers, attractive foliage
 Flower Season: Spring
 Growth Rate: Moderate

Botanical Name: *Prunus virginiana melanocarpa*
Common Name: **Native Chokecherry**
Mature Height: 8-20'
Mature Spread: 8-12'
Exposure: Sun / Part Shade
Water Requirement: Low
Features: Attractive foliage, showy flowers
Flower Season: Spring
Growth Rate: Fast



Botanical Name: *Rhus aromatica 'Grow-Low'*
Common Name: **Fragrant Dwarf Sumac**
Mature Height: 2-3'
Mature Spread: 6-8'
Exposure: Sun
Water Requirement: Low
Features: Attractive foliage
Flower Season: Spring
Growth Rate: Fast



Botanical Name: *Ribes alpinum*
Common Name: **Alpine Currant**
Mature Height: 3-6'
Mature Spread: 3-6'
Exposure: Sun / Part Shade
Water Requirement: Low
Features: Showy flowers
Flower Season: Spring
Growth Rate: Moderate





Botanical Name: *Rosa Climbing 'William Baffin'*
 Common Name: **William Baffin Climbing Rose**
 Mature Height: 7-10'
 Mature Spread: 7-8'
 Exposure: Sun
 Water Requirement: Low
 Features: Showy flowers, climber
 Flower Season: Summer
 Growth Rate: Moderate



Botanical Name: *Spiraea japonica 'Limemound'*
 Common Name: **Limemound Spirea**
 Mature Height: 18-24"
 Mature Spread: 2-3'
 Exposure: Sun / Part Shade
 Water Requirement: Medium
 Features: Showy flowers, attractive foliage
 Flower Season: Spring
 Growth Rate: Moderate



Botanical Name: *Spiraea nipponica 'Snowmound'*
 Common Name: **Snowmound Spirea**
 Mature Height: 3-5'
 Mature Spread: 3-5'
 Exposure: Sun / Part Shade
 Water Requirement: Medium
 Features: Showy flowers
 Flower Season: Spring
 Growth Rate: Moderate

Botanical Name: *Syringa patula* 'Miss Kim'
Common Name: **Miss Kim Dwarf Lilac**
Mature Height: 3-5'
Mature Spread: 3-5'
Exposure: Sun
Water Requirement: Low
Features: Showy flowers, fragrant flowers
Flower Season: Spring
Growth Rate: Slow



Botanical Name: *Syringa vulgaris*
Common Name: **Common Purple Lilac**
Mature Height: 10-20'
Mature Spread: 8-12'
Exposure: Sun / Part Shade
Water Requirement: Low
Features: Showy flowers
Flower Season: Spring
Growth Rate: Moderate





Botanical Name: *Achillea* 'Moonshine'
Common Name: **Moonshine Yarrow**
Mature Height: 24-30"
Mature Spread: 18-24"
Exposure: Sun
Water Requirement: Low
Features: Yellow flowers
Flower Season: Summer
Growth Rate: Fast



Botanical Name: *Calamagrostis acutiflora* 'Karl Foerster'
Common Name: **Feather Reed Grass**
Mature Height: 4-5'
Mature Spread: 18-24"
Exposure: Sun / Part Shade
Water Requirement: Low
Features: Bronze flower color, fall color
Flower Season: Summer
Growth Rate: Fast



Botanical Name: *Cerastium tomentosum*
Common Name: **Snow-In-Summer**
Mature Height: 6-12"
Mature Spread: 12-18"
Exposure: Sun
Water Requirement: Low
Features: Showy flowers
Flower Season: Summer
Growth Rate: Fast

Botanical Name: *Echinacea purpurea*
 Common Name: **Purple Coneflower**
 Mature Height: 2-3'
 Mature Spread: 18-24"
 Exposure: Sun
 Water Requirement: Low
 Features: Showy flowers
 Flower Season: Summer
 Growth Rate: Fast



Botanical Name: *Erianthus ravennae*
 Common Name: **Hardy Plume Grass**
 Mature Height: 10-12'
 Mature Spread: 3-5'
 Exposure: Sun
 Water Requirement: Low
 Features: Winter Interest
 Flower Season: N/A
 Growth Rate: Modera



Botanical Name: *Euonymus fortunei 'Coloratus'*
 Common Name: **Purpleleaf Wintercreeper**
 Mature Height: 12-18"
 Mature Spread: 3-6'
 Exposure: Shade / Part Shade
 Water Requirement: Low
 Features: Evergreen, climber
 Flower Season: Summer
 Growth Rate: Moderate





Botanical Name: *Gaillardia x grandiflora*
 Common Name: **Native Blanket Flower**
 Mature Height: 18-24"
 Mature Spread: 18-24"
 Exposure: Sun
 Water Requirement: Low
 Features: Showy flowers
 Flower Season: Summer
 Growth Rate: Moderate



Botanical Name: *Hemerocallis 'Stella de Oro'*
 Common Name: **Dwarf Gold Daylily**
 Mature Height: 1-2'
 Mature Spread: 12-18"
 Exposure: Sun
 Water Requirement: Low
 Features: Showy flowers
 Flower Season: Summer
 Growth Rate: Moderate



Botanical Name: *Mahonia repens*
 Common Name: **Creeping Colorado Holly**
 Mature Height: 12-18"
 Mature Spread: 12-18"
 Exposure: Shade / Part Shade
 Water Requirement: Low
 Features: Dark Blue-Green Leaves
 Flower Season: Spring
 Growth Rate: Moderate

Botanical Name: *Miscanthus sinensis* 'Morning Light'
 Common Name: **Morning Light Maiden Grass**
 Mature Height: 4-5'
 Mature Spread: 2-3'
 Exposure: Sun
 Water Requirement: Low
 Features: Attractive foliage
 Flower Season: Summer
 Growth Rate: Fast



Botanical Name: *Rudbeckia fulgida* 'Goldstrum'
 Common Name: **Black-Eyed Susan**
 Mature Height: 18-24"
 Mature Spread: 18-24"
 Exposure: Sun
 Water Requirement: Low
 Features: Showy flowers
 Flower Season: Summer
 Growth Rate: Fast



Botanical Name: *Salvia pachyphylla*
 Common Name: **Mojave Sage**
 Mature Height: 2-3'
 Mature Spread: 2-3'
 Exposure: Sun
 Water Requirement: Low
 Features: Showy flowers
 Flower Season: Summer
 Growth Rate: Moderate



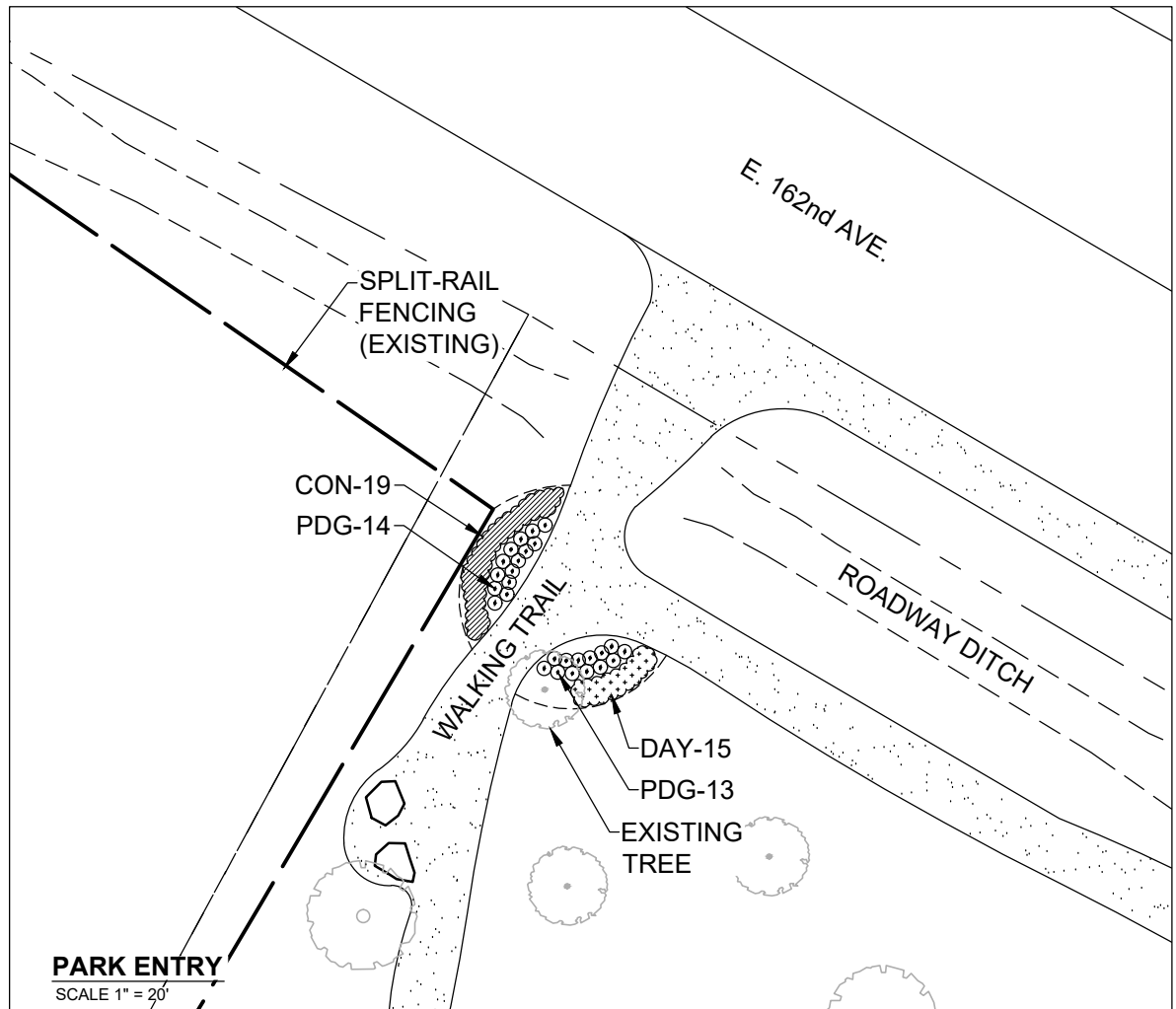
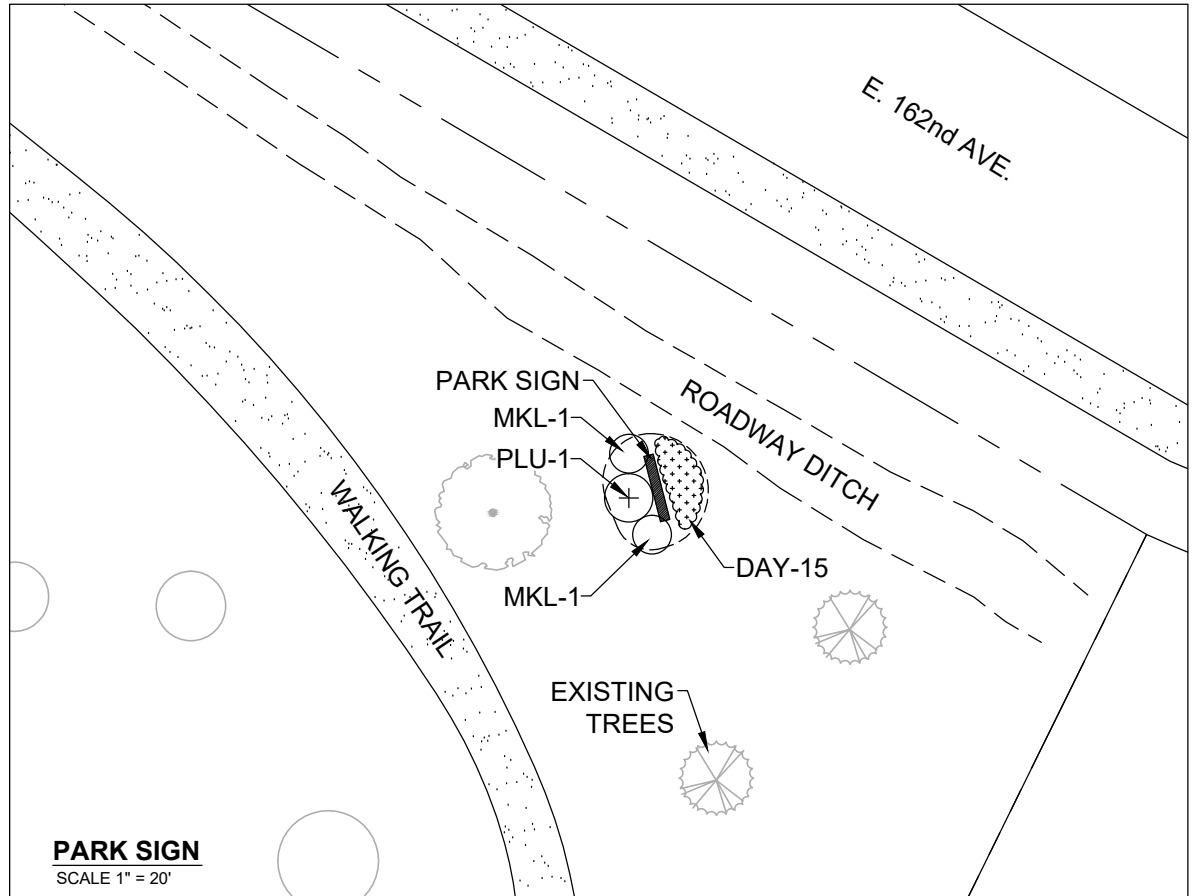
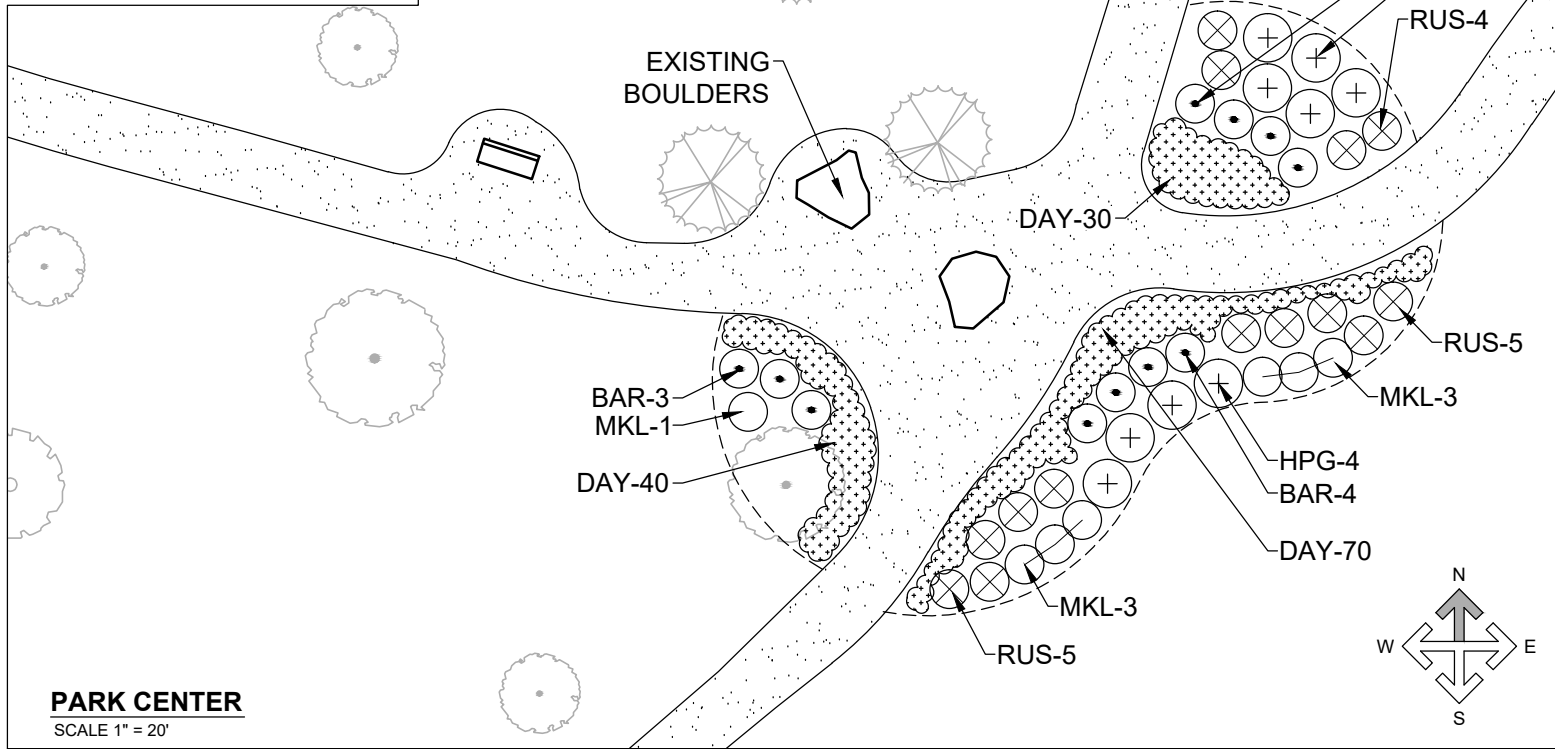
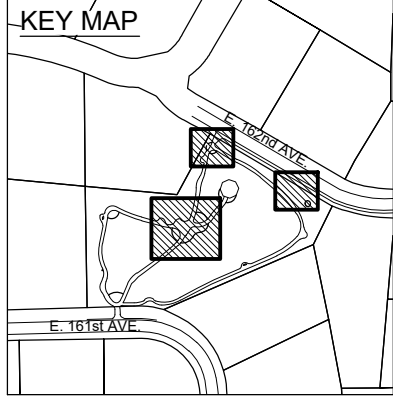


Botanical Name: *Salvia nemorosa*
Common Name: **May Night Salvia**
Mature Height: 18-24"
Mature Spread: 12-18"
Exposure: Sun
Water Requirement: Low
Features: Showy flowers
Flower Season: Summer
Growth Rate: Moderate



Botanical Name: *Sporobolus heterolepis*
Common Name: **Prairie Dropseed Grass**
Mature Height: 24-30"
Mature Spread: 18-24"
Exposure: Sun
Water Requirement: Low
Features: Fall Color
Flower Season: Summer
Growth Rate: Fast





PLANTING SCHEDULE

SHRUBS

QTY	LABEL	COMMON NAME	BOTANICAL NAME	SIZE	WATER	SPACING	HEIGHT
11	BAR	REDLEAF JAPANESE BARBERRY	BERBERIS THUNBERGI 'ATROPURPUREA'	#5	LOW	AS SHOWN	3'
14	RUS	RUSSIAN SAGE	PEROVSKIA ATRIPLICIFOLIA	#5	LOW	AS SHOWN	3'
9	MKL	MISS KIM LILAC	SYRING PATULA 'MISS KIM'	#5	LOW	AS SHOWN	4'

PERENNIALS / ORNAMENTAL GRASS

QTY	LABEL	COMMON NAME	BOTANICAL NAME	SIZE	WATER	SPACING	HEIGHT
19	CON	PURPLE CONEFLOWER	ECHINACEA PURPUREA	#1	LOW	24"	2.5'
85	DAY*	DWARF YELLOW DAYLILY	HEMEROCALLIS 'HAPPY RETURNS'	#1	LOW	18"	1.5'
85	DAY*	WHITE DAYLILY	HEMEROCALLIS 'JOAN SENIOR'	#1	LOW	18"	2'
10	PLU	HARDY PLUME GRASS	SACCHARUM RAVENNAE	#1	LOW	AS SHOWN	8'
27	PDG	PRAIRIE DROPSEED GRASS	SPOROBOLUS HETEROLEPIS	#1	LOW	18"	2.5'

* DAYLILY PLANTINGS TO BE 50/50 MIX AT 18" O.C.

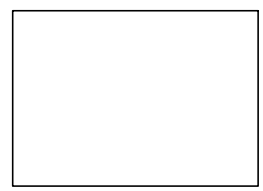


No.	Revision	Date	By
1	BOARD REVIEW	09/01/15	AJB
2	FINAL	10/15/15	AJB

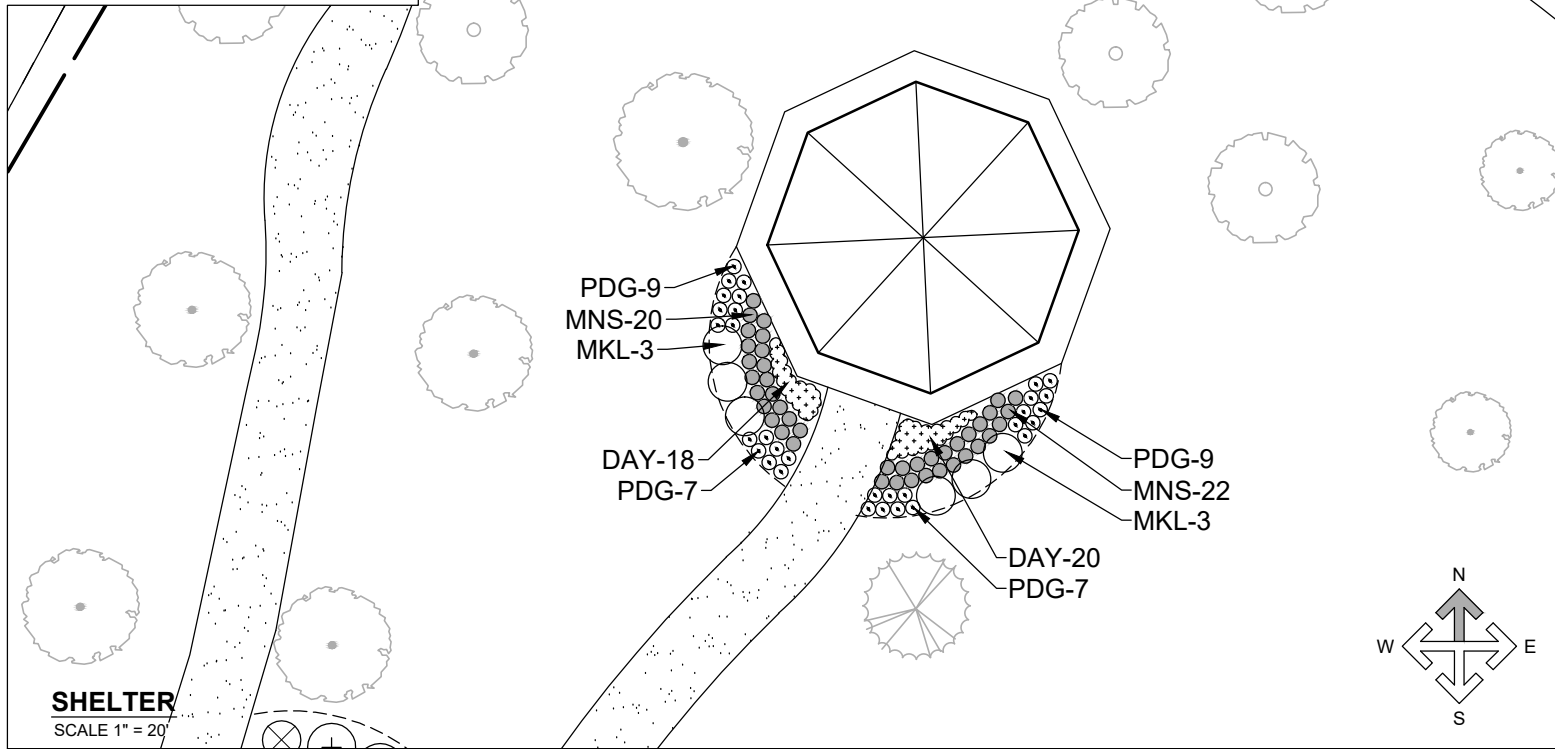
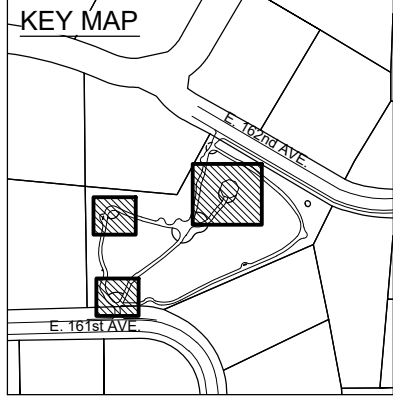
TODD CREEK MEADOWS
 OUTLOT A PARK

CALL UTILITY NOTIFICATION
 CENTER OF COLORADO
 811
 CALL 3 BUSINESS DAYS IN ADVANCE
 BEFORE YOU DIG, GRADE, OR EXCAVATE
 FOR THE MARKING OF UNDERGROUND
 MEMBER UTILITIES

TODD CREEK VILLAGE
 PARK AND RECREATION DISTRICT



DATE: 07/01/2015
 JOB NUMBER: -
 SCALE: AS NOTED



SHELTER
SCALE 1" = 20'

PLANTING SCHEDULE

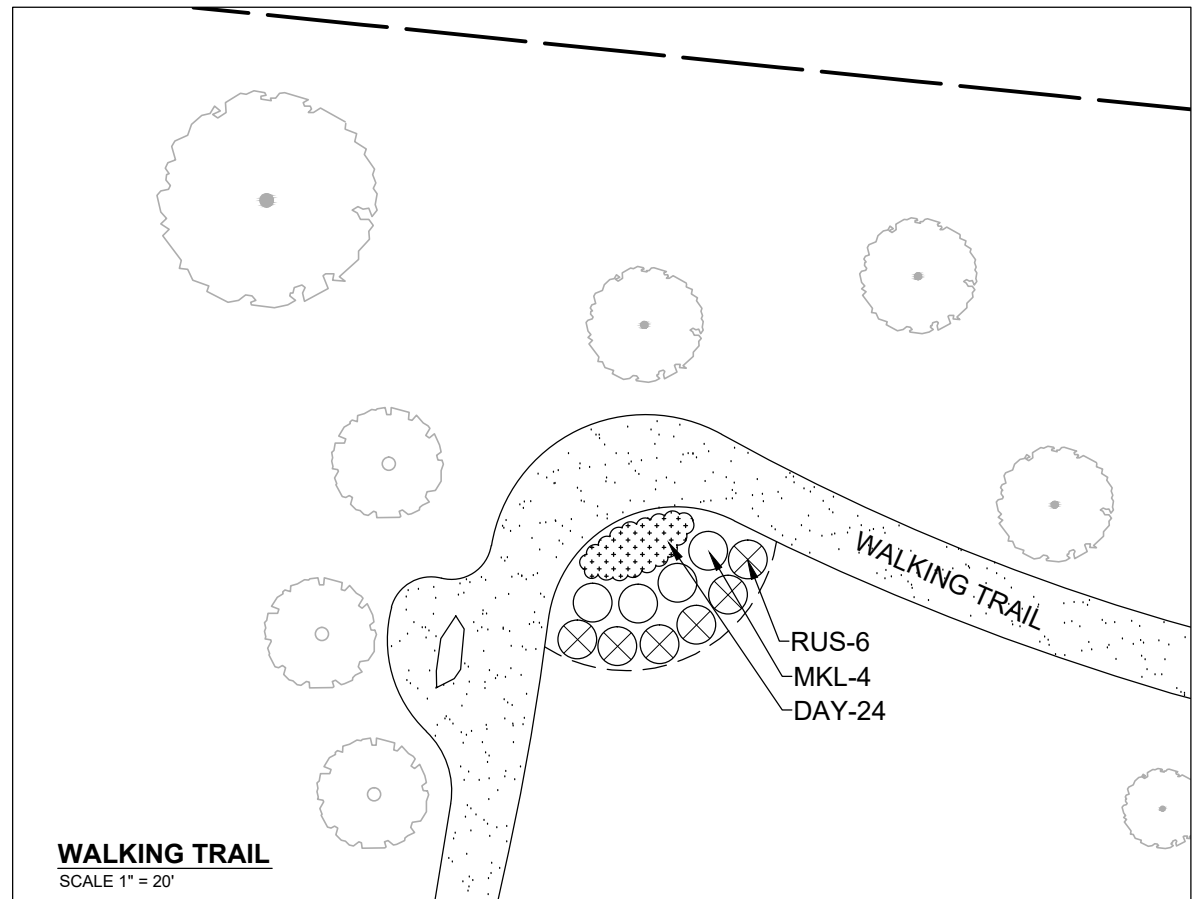
SHRUBS

QTY	LABEL	COMMON NAME	BOTANICAL NAME	SIZE	WATER	SPACING	HEIGHT
6	RUS	RUSSIAN SAGE	PEROVSKIA ATRIPLICIFOLIA	#5	LOW	AS SHOWN	3'
16	MKL	MISS KIM LILAC	SYRING PATULA 'MISS KIM'	#5	LOW	AS SHOWN	4'

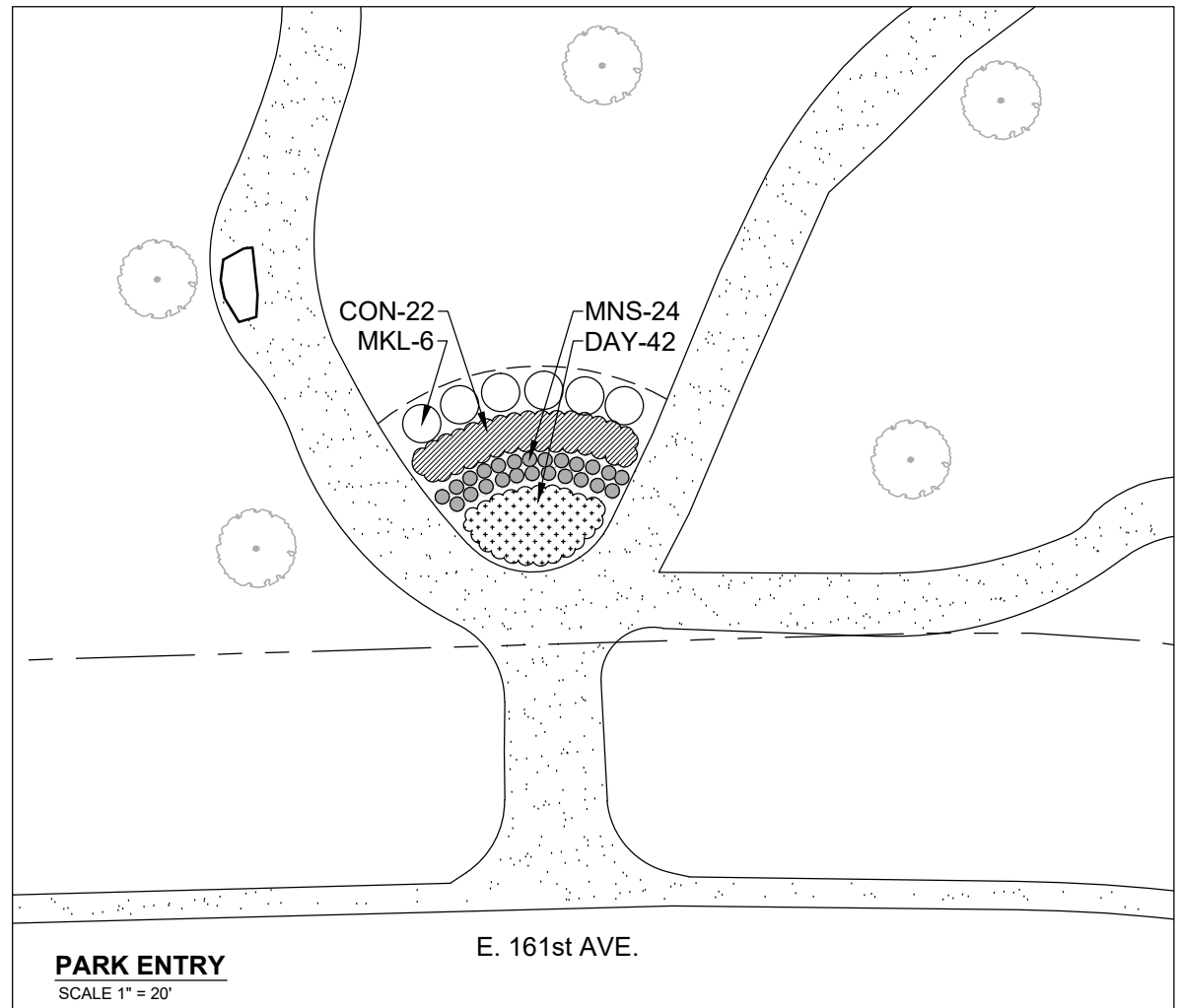
PERENNIALS / ORNAMENTAL GRASS

QTY	LABEL	COMMON NAME	BOTANICAL NAME	SIZE	WATER	SPACING	HEIGHT
22	CON	PURPLE CONEFLOWER	ECHINACEA PURPUREA	#1	LOW	24"	2.5'
52	DAY*	DWARF YELLOW DAYLILY	HEMEROCALLIS 'HAPPY RETURNS'	#1	LOW	18"	1.5'
52	DAY*	WHITE DAYLILY	HEMEROCALLIS 'JOAN SENIOR'	#1	LOW	18"	2'
66	MNS	MAY NIGHT SALVIA	SALVIA NEMOROSA	#1	LOW	18"	2'
32	PDG	PRAIRIE DROPSEED GRASS	SPOROBOLUS HETEROLEPIS	#1	LOW	18"	2.5'

* DAYLILY PLANTINGS TO BE 50/50 MIX AT 18" O.C.



WALKING TRAIL
SCALE 1" = 20'



PARK ENTRY
SCALE 1" = 20'

E. 161st AVE.



No.	Revision	Date	By
1	BOARD REVIEW	09/01/15	AJB
2	FINAL	10/15/15	AJB

TODD CREEK MEADOWS
OUTLOT A PARK

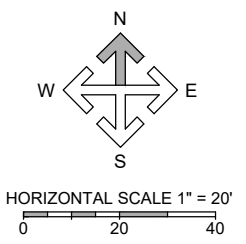
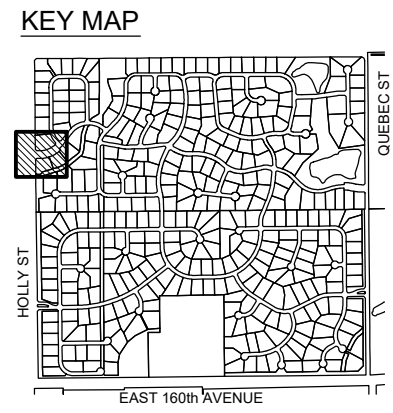
CALL UTILITY NOTIFICATION CENTER OF COLORADO 811
CALL 3 BUSINESS DAYS IN ADVANCE BEFORE YOU DIG, GRADE, OR EXCAVATE FOR THE MARKING OF UNDERGROUND MEMBER UTILITIES

TODD CREEK VILLAGE
PARK AND RECREATION DISTRICT

DATE: 07/01/2015
JOB NUMBER: -
SCALE: AS NOTED

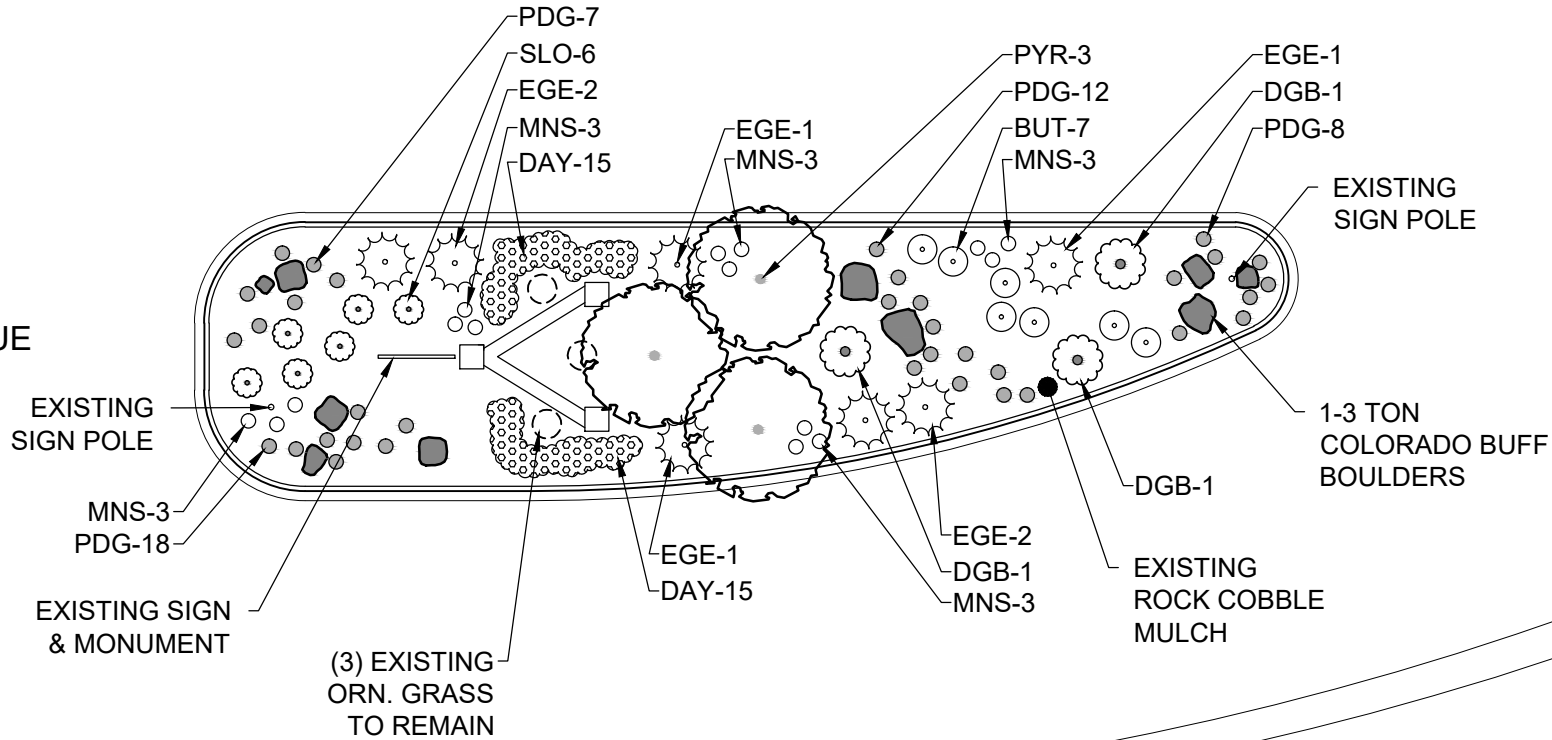


No.	Revision	Date	By
1	BOARD REVIEW	09/15/15	AJB
2	FINAL	10/15/15	AJB



HOLLY STREET

EAGLE SHADOW AVENUE



PLANTING SCHEDULE

TREES							
QTY	LABEL	COMMON NAME	BOTANICAL NAME	SIZE	WATER	SPACING	HEIGHT
3	PYR	CHANTICLEER PEAR	PYRUS CALLERYANA 'CHANTICLEER'	2.5" CAL.	LOW	AS SHOWN	25'

SHRUBS							
QTY	LABEL	COMMON NAME	BOTANICAL NAME	SIZE	WATER	SPACING	HEIGHT
7	BUT	BUTTERFLY BUSH	BUDDLEJA DAVIDII ADONIS BLUE	#5	LOW	AS SHOWN	4'
7	EGE	EMERALD GAIETY EUONYMUS	EUONYMUS FORTUNEI 'EMERALD GAIETY'	#5	LOW	AS SHOWN	1.5'
3	DGB	DWARF GLOBE BLUE SPRUCE	PICEA PUNGENS 'GLAUCA GLOBOSA'	#5	LOW	AS SHOWN	8'
6	SLO	SLOWMOUND MUGO PINE	PINUS MUGO 'SLOWMOUND'	#5	LOW	AS SHOWN	3'

PERENNIALS / ORNAMENTAL GRASS							
QTY	LABEL	COMMON NAME	BOTANICAL NAME	SIZE	WATER	SPACING	HEIGHT
30	DAY	TANGERINE ORANGE DAYLILY	HEMEROCALLIS 'SPELLBINDER'	#1	LOW	AS SHOWN	2.5'
15	MNS	MAY NIGHT SALVIA	SALVIA NEMOROSA	#1	LOW	AS SHOWN	2'
35	PDG	PRAIRIE DROPSEED GRASS	SPOROBOLUS HETEROLEPIS	#1	LOW	AS SHOWN	2.5'

EAGLE SHADOW NORTH
 TODD CREEK VILLAGE
 NW Median

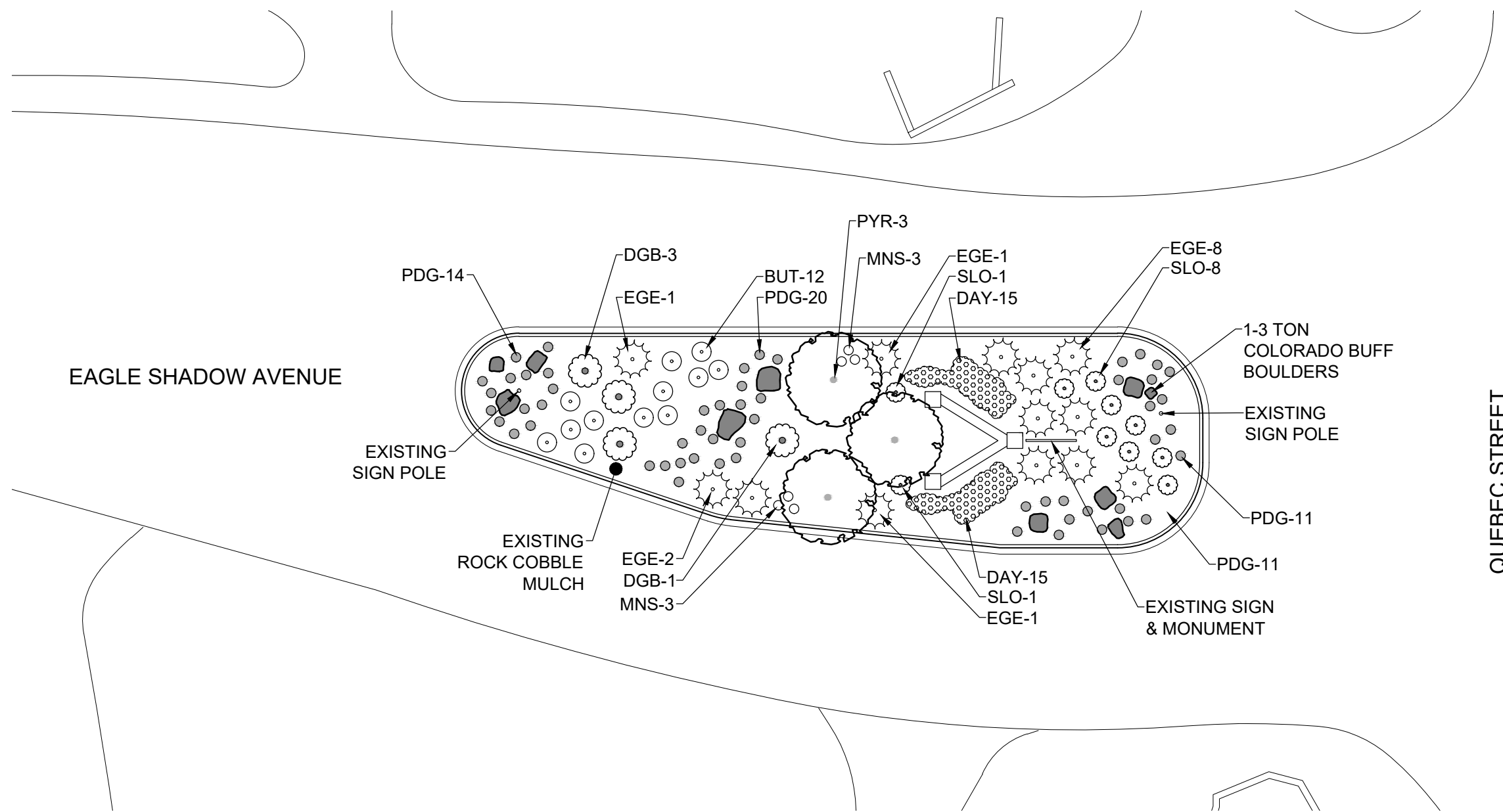
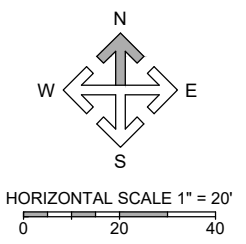
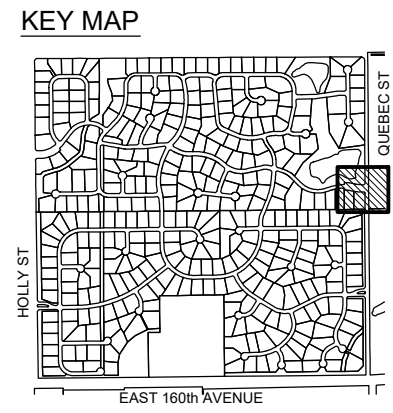
CALL UTILITY NOTIFICATION CENTER OF COLORADO
811
 CALL 3 BUSINESS DAYS IN ADVANCE BEFORE YOU DIG, GRADE, OR EXCAVATE FOR THE MARKING OF UNDERGROUND MEMBER UTILITIES

TODD CREEK VILLAGE
 PARK AND RECREATION DISTRICT

DATE: 07/01/2015
 JOB NUMBER: -
 SCALE: AS NOTED



No.	Revision	Date	By
1	BOARD REVIEW	09/15/15	AJB
2	FINAL	10/15/15	AJB



PLANTING SCHEDULE

TREES

QTY	LABEL	COMMON NAME	BOTANICAL NAME	SIZE	WATER	SPACING	HEIGHT
3	PYR	CHANTICLEER PEAR	PYRUS CALLERYANA 'CHANTICLEER'	2.5" CAL.	LOW	AS SHOWN	25'

SHRUBS

QTY	LABEL	COMMON NAME	BOTANICAL NAME	SIZE	WATER	SPACING	HEIGHT
12	BUT	BUTTERFLY BUSH	BUDDLEJA DAVIDII ADONIS BLUE	#5	LOW	AS SHOWN	4'
13	EGE	EMERALD GAIETY EUONYMUS	EUONYMUS FORTUNEI 'EMERALD GAIETY'	#5	LOW	AS SHOWN	1.5'
4	DGB	DWARF GLOBE BLUE SPRUCE	PICEA PUNGENS 'GLAUCA GLOBOSA'	#5	LOW	AS SHOWN	8'
10	SLO	SLOWMOUND MUGO PINE	PINUS MUGO 'SLOWMOUND'	#5	LOW	AS SHOWN	3'

PERENNIALS / ORNAMENTAL GRASS

QTY	LABEL	COMMON NAME	BOTANICAL NAME	SIZE	WATER	SPACING	HEIGHT
30	DAY	TANGERINE ORANGE DAYLILY	HEMEROCALLIS 'SPELLBINDER'	#1	LOW	AS SHOWN	2.5'
6	MNS	MAY NIGHT SALVIA	SALVIA NEMOROSA	#1	LOW	AS SHOWN	2'
56	PDG	PRAIRIE DROPSEED GRASS	SPOROBOLUS HETEROLEPIS	#1	LOW	AS SHOWN	2.5'

EAGLE SHADOW NORTH
TODD CREEK VILLAGE
NE Median

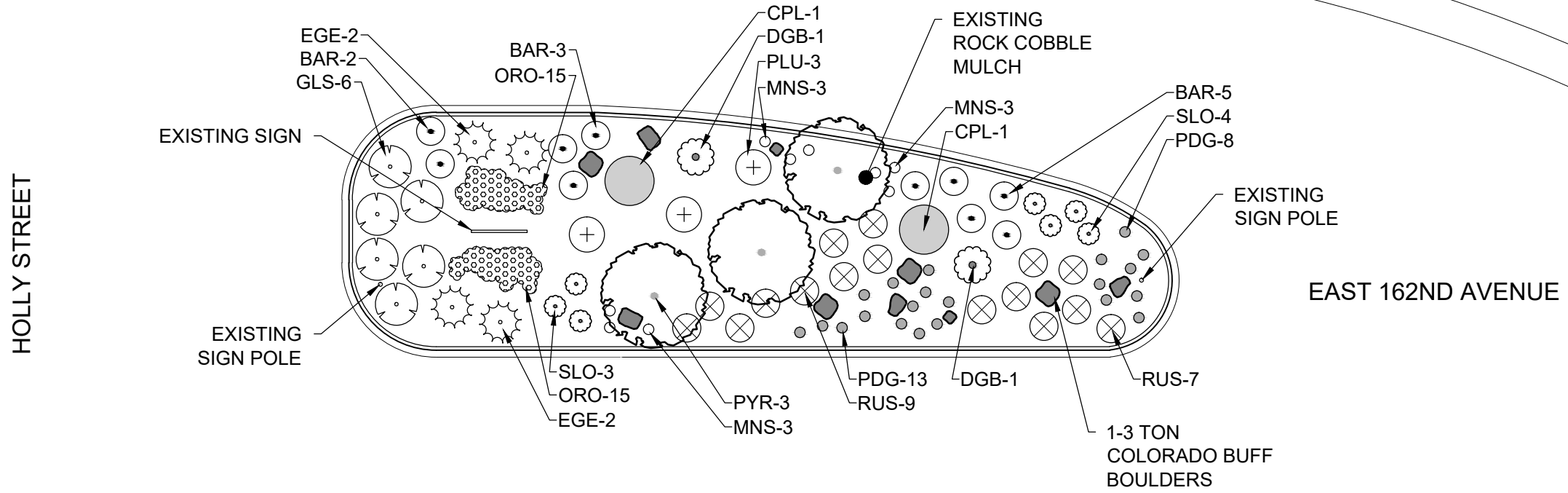
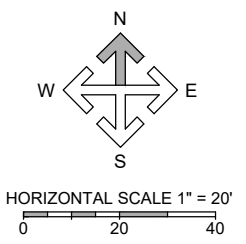
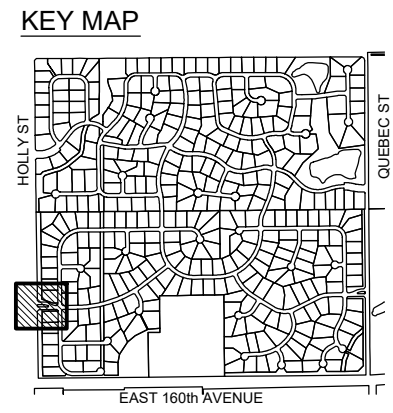
CALL UTILITY NOTIFICATION
CENTER OF COLORADO
811
CALL 3 BUSINESS DAYS IN ADVANCE
BEFORE YOU DIG, GRADE, OR EXCAVATE
FOR THE MARKING OF UNDERGROUND
MEMBER UTILITIES

TODD CREEK VILLAGE
PARK AND RECREATION DISTRICT

DATE: 07/01/2015
JOB NUMBER: -
SCALE: AS NOTED



No.	Revision	Date	By
1	BOARD REVIEW	09/15/15	AJB
2	FINAL	10/15/15	AJB



PLANTING SCHEDULE

TREES							
QTY	LABEL	COMMON NAME	BOTANICAL NAME	SIZE	WATER	SPACING	HEIGHT
3	PYR	CHANTICLEER PEAR	PYRUS CALLERYANA 'CHANTICLEER'	2.5" CAL.	LOW	AS SHOWN	25'
SHRUBS							
QTY	LABEL	COMMON NAME	BOTANICAL NAME	SIZE	WATER	SPACING	HEIGHT
10	BAR	REDLEAF JAPANESE BARBERRY	BERBERIS THUNBERGI 'ATROPURPUREA'	#5	LOW	AS SHOWN	4'
4	EGE	EMERALD GAIETY EUONYMUS	EUONYMUS FORTUNEI 'EMERALD GAIETY'	#5	LOW	AS SHOWN	1.5'
16	RUS	RUSSIAN SAGE	PEROVSKIA ATRIPLICIFOLIA	#5	LOW	AS SHOWN	4'
2	DGB	DWARF GLOBE BLUE SPRUCE	PICEA PUNGENS 'GLAUCA GLOBOSA'	#5	LOW	AS SHOWN	8'
7	SLO	SLOWMOUND MUGO PINE	PINUS MUGO 'SLOWMOUND'	#5	LOW	AS SHOWN	3'
6	GLS	GROW-LOW SUMAC	RHUS AROMATICA 'GROW-LOW'	#5	LOW	AS SHOWN	2'
2	CPL	COMMON PURPLE LILAC	SYRINGA VULGARIS	#5	LOW	AS SHOWN	12'
PERENNIALS / ORNAMENTAL GRASS							
QTY	LABEL	COMMON NAME	BOTANICAL NAME	SIZE	WATER	SPACING	HEIGHT
30	ORO	DWARF GOLD DAYLILY	HEMEROCALLIS 'STELLA DE ORO'	#1	LOW	AS SHOWN	1.5'
3	PLU	HARDY PLUME GRASS	ERIANTHUS RAVENNAE	#1	LOW	AS SHOWN	8'
9	MNS	MAY NIGHT SALVIA	SALVIA NEMOROSA	#1	LOW	AS SHOWN	2'
21	PDG	PRAIRIE DROPSEED GRASS	SPOROBOLUS HETEROLEPIS	#1	LOW	AS SHOWN	2.5'

EAGLE SHADOW NORTH
TODD CREEK VILLAGE
SW Median

**CALL UTILITY NOTIFICATION
CENTER OF COLORADO
811**
CALL 3 BUSINESS DAYS IN ADVANCE
BEFORE YOU DIG, GRADE, OR EXCAVATE
FOR THE MARKING OF UNDERGROUND
MEMBER UTILITIES

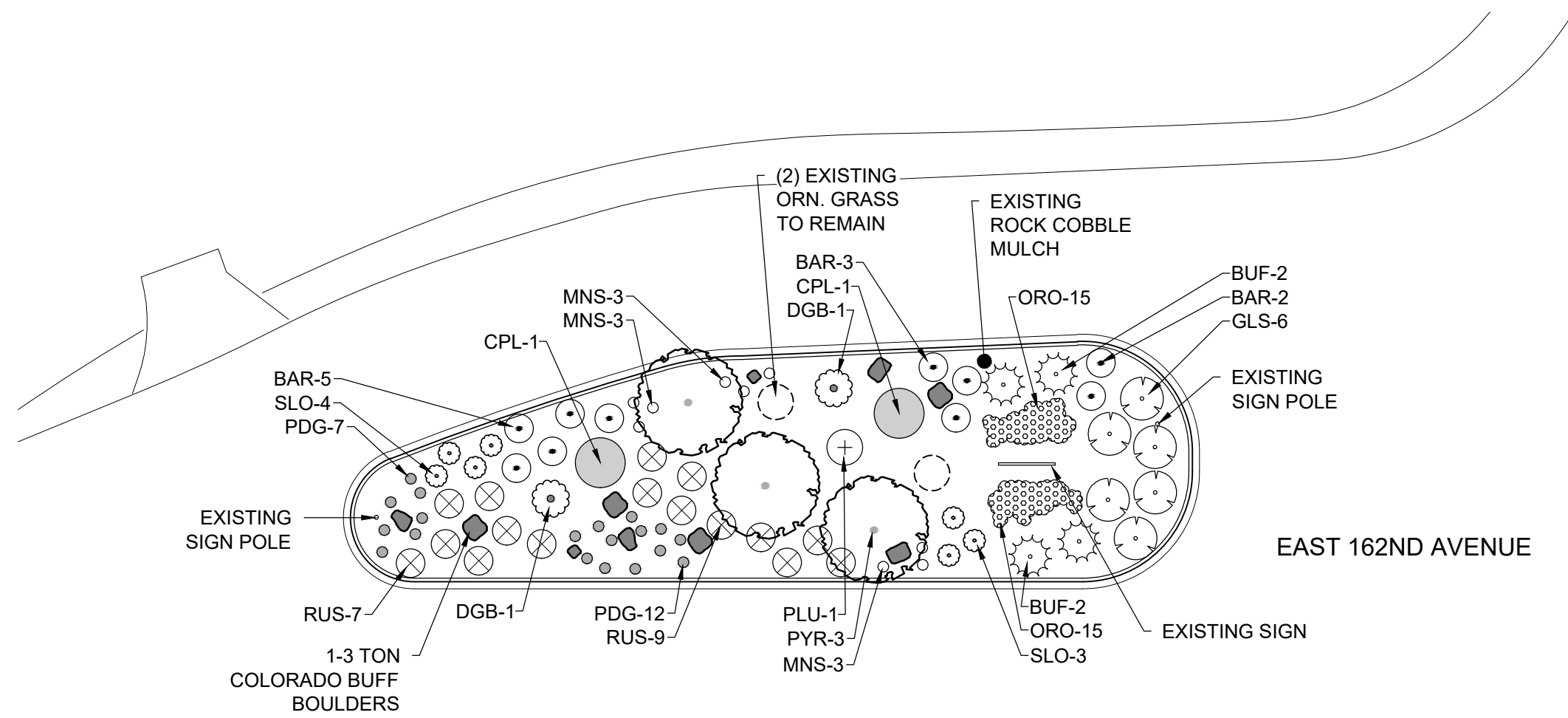
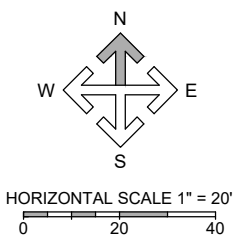
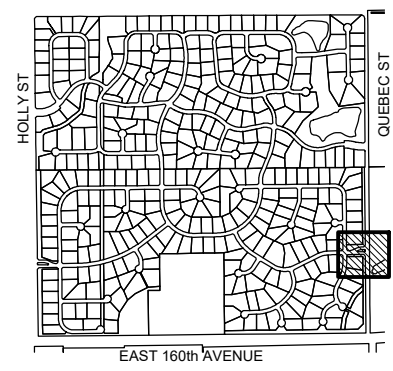
TODD CREEK VILLAGE
PARK AND RECREATION DISTRICT

DATE: 07/01/2015
JOB NUMBER: -
SCALE: AS NOTED



No.	Revision	Date	By
1	BOARD REVIEW	09/15/15	AJB
2	FINAL	10/15/15	AJB

KEY MAP



QUEBEC STREET

EAST 162ND AVENUE

PLANTING SCHEDULE

TREES							
QTY	LABEL	COMMON NAME	BOTANICAL NAME	SIZE	WATER	SPACING	HEIGHT
3	PYR	CHANTICLEER PEAR	PYRUS CALLERYANA 'CHANTICLEER'	2.5" CAL.	LOW	AS SHOWN	25'

SHRUBS							
QTY	LABEL	COMMON NAME	BOTANICAL NAME	SIZE	WATER	SPACING	HEIGHT
10	BAR	REDLEAF JAPANESE BARBERRY	BERBERIS THUNBERGI 'ATROPURPUREA'	#5	LOW	AS SHOWN	4'
4	EGE	EMERALD GAIETY EUONYMUS	EUONYMUS FORTUNEI 'EMERALD GAIETY'	#5	LOW	AS SHOWN	1.5'
16	RUS	RUSSIAN SAGE	PEROVSKIA ATRIPLICIFOLIA	#5	LOW	AS SHOWN	4'
2	DGB	DWARF GLOBE BLUE SPRUCE	PICEA PUNGENS 'GLAUCA GLOBOSA'	#5	LOW	AS SHOWN	8'
7	SLO	SLOWMOUND MUGO PINE	PINUS MUGO 'SLOWMOUND'	#5	LOW	AS SHOWN	3'
6	GLS	GROW-LOW SUMAC	RHUS AROMATICA 'GROW-LOW'	#5	LOW	AS SHOWN	2'
2	CPL	COMMON PURPLE LILAC	SYRINGA VULGARIS	#5	LOW	AS SHOWN	12'

PERENNIALS / ORNAMENTAL GRASS							
QTY	LABEL	COMMON NAME	BOTANICAL NAME	SIZE	WATER	SPACING	HEIGHT
30	ORO	DWARF GOLD DAYLILY	HEMEROCALLIS 'STELLA DE ORO'	#1	LOW	AS SHOWN	1.5'
1	PLU	HARDY PLUME GRASS	ERIANTHUS RAVENNAE	#1	LOW	AS SHOWN	8'
9	MNS	MAY NIGHT SALVIA	SALVIA NEMOROSA	#1	LOW	AS SHOWN	2'
19	PDG	PRAIRIE DROPSEED GRASS	SPOROBOLUS HETEROLEPIS	#1	LOW	AS SHOWN	2.5'

EAGLE SHADOW NORTH
TODD CREEK VILLAGE
SE Median

CALL UTILITY NOTIFICATION
CENTER OF COLORADO
811
CALL 3 BUSINESS DAYS IN ADVANCE
BEFORE YOU DIG, GRADE, OR EXCAVATE
FOR THE MARKING OF UNDERGROUND
MEMBER UTILITIES

TODD CREEK VILLAGE
PARK AND RECREATION DISTRICT

DATE: 07/01/2015
JOB NUMBER: -
SCALE: AS NOTED

- Keep trail along residential property line, (1) culvert crossing required at Jasmine St.



- Utilize existing maintenance access road.
- Trail loop connection - Eagle Shadow Ave. & Jasmine St.
- If water tap is available, provide screening along west side of outlet.



- Set trail adjacent to drainage channel.
- Bench location - orient northwest.
- Keep trail on high side of tract to avoid low drainage area.
- Remove (3) fence sections to provide a connection to cul-de-sac. (1) culvert crossing required.
- To stay outside the public R.O.W. - a crossing over the existing concrete culvert will be required.



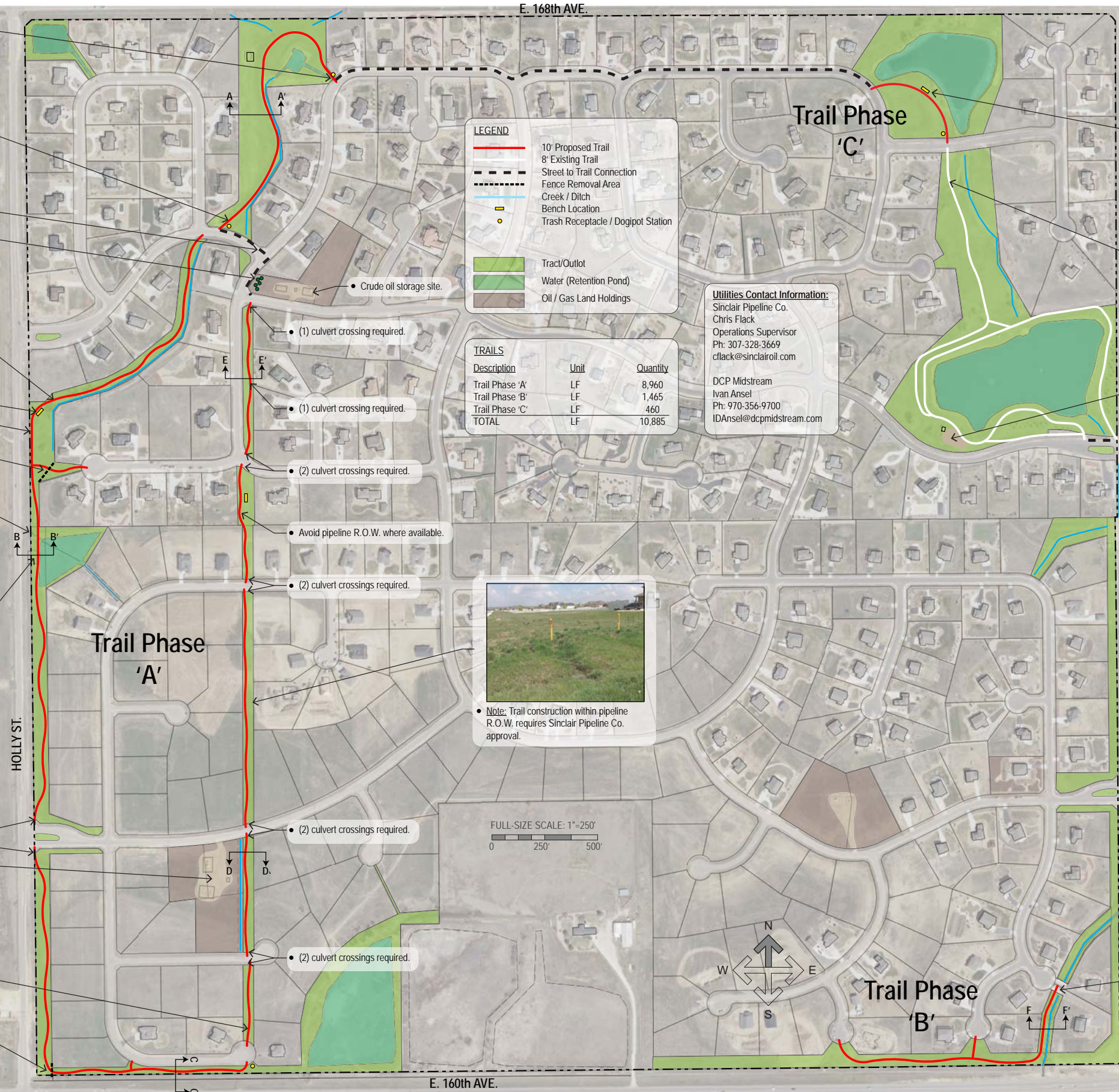
- Rip rap overflow - crossing required.



- Rip rap overflow - concrete upgrade.

- (2) culvert crossings may be required.
- Crude oil storage site.

- Note: Trail construction within pipeline R.O.W. will require Sinclair Pipeline Co. approval and construction observation.
- Remove (3) fence sections to provide an east-west trail connection.



LEGEND

- 10' Proposed Trail
- 8' Existing Trail
- Street to Trail Connection
- Fence Removal Area
- Creek / Ditch
- Bench Location
- Trash Receptacle / Dogpot Station
- Tract/Outlot
- Water (Retention Pond)
- Oil / Gas Land Holdings

TRAILS

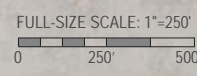
Description	Unit	Quantity
Trail Phase 'A'	LF	8,960
Trail Phase 'B'	LF	1,465
Trail Phase 'C'	LF	460
TOTAL	LF	10,885

Utilities Contact Information:
 Sinclair Pipeline Co.
 Chris Flack
 Operations Supervisor
 Ph: 307-328-3669
 cflack@sinclairoil.com

DCP Midstream
 Ivan Ansel
 Ph: 970-356-9700
 IDAnsel@dcpmidstream.com



• Note: Trail construction within pipeline R.O.W. requires Sinclair Pipeline Co. approval.



- Sandstone boulder 'bench' - orient bench towards pond.



- This low spot is a large drainage channel - provide culvert crossing or concrete overflow.

- Remulch playground area.



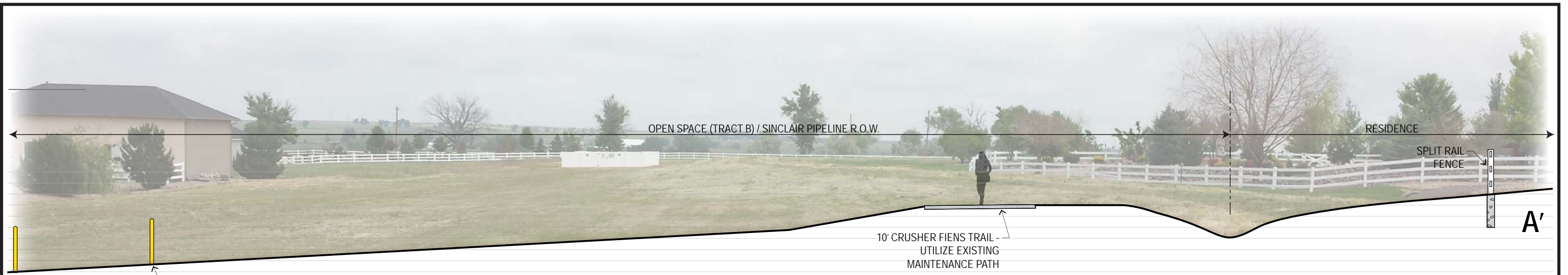
- Trail proceeds through drainage corridor - trail to stop at private driveway.

EAGLE SHADOW - Trails, Parks, and Open Space Plan

Brighton, CO

October 15, 2015





A

PIPELINE MARKERS

OPEN SPACE (TRACT B) / SINCLAIR PIPELINE R.O.W.

RESIDENCE

SPLIT RAIL FENCE

A'

10' CRUSHER FIENS TRAIL - UTILIZE EXISTING MAINTENANCE PATH



B

HOLLY STREET

PUBLIC R.O.W.

HIGH-PRESSURE GAS LINE

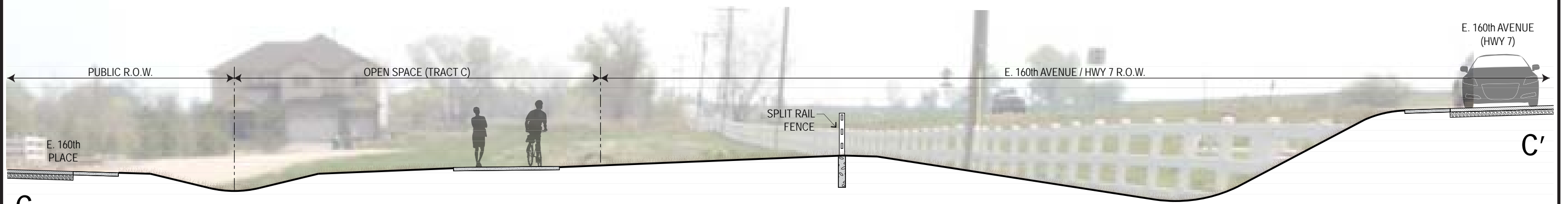
~ 60' WIDTH RIP RAP OVERFLOW

EAGLE SHADOW OUTLOT

TRAIL CROSSING - UPGRADE TO CONCRETE OVERFLOW

RETENTION POND (TRACT M)

B'



C

PUBLIC R.O.W.

OPEN SPACE (TRACT C)

E. 160th AVENUE / HWY 7 R.O.W.

E. 160th AVENUE (HWY 7)

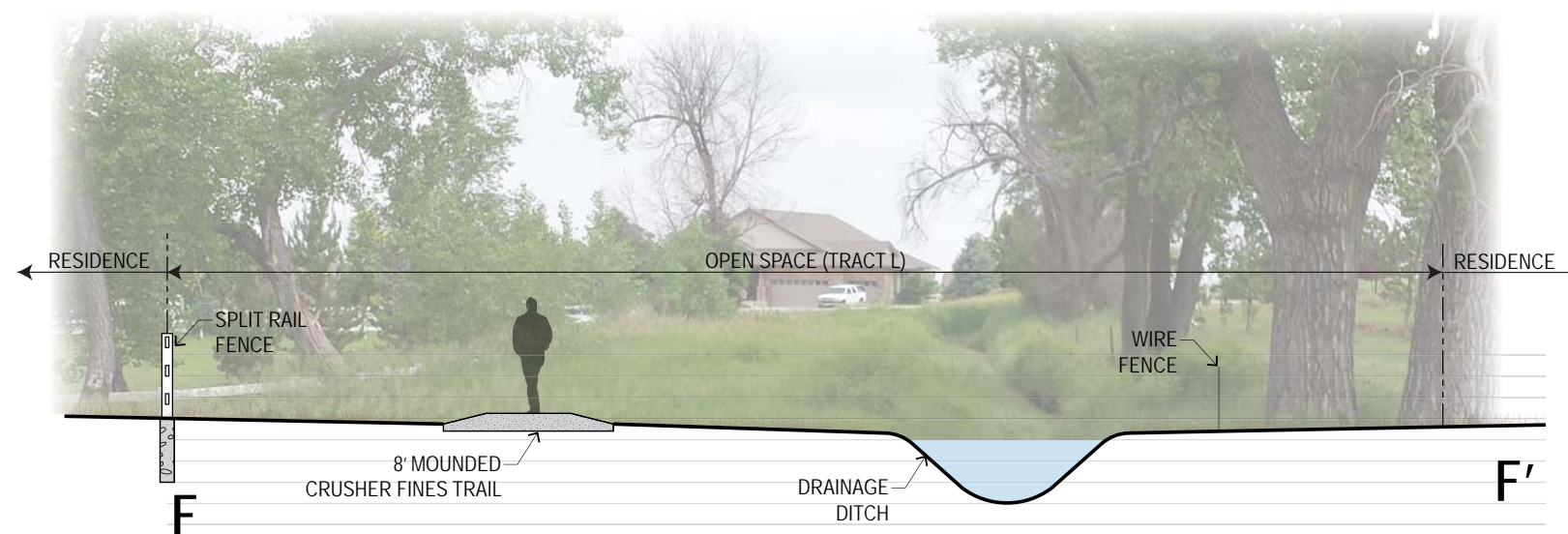
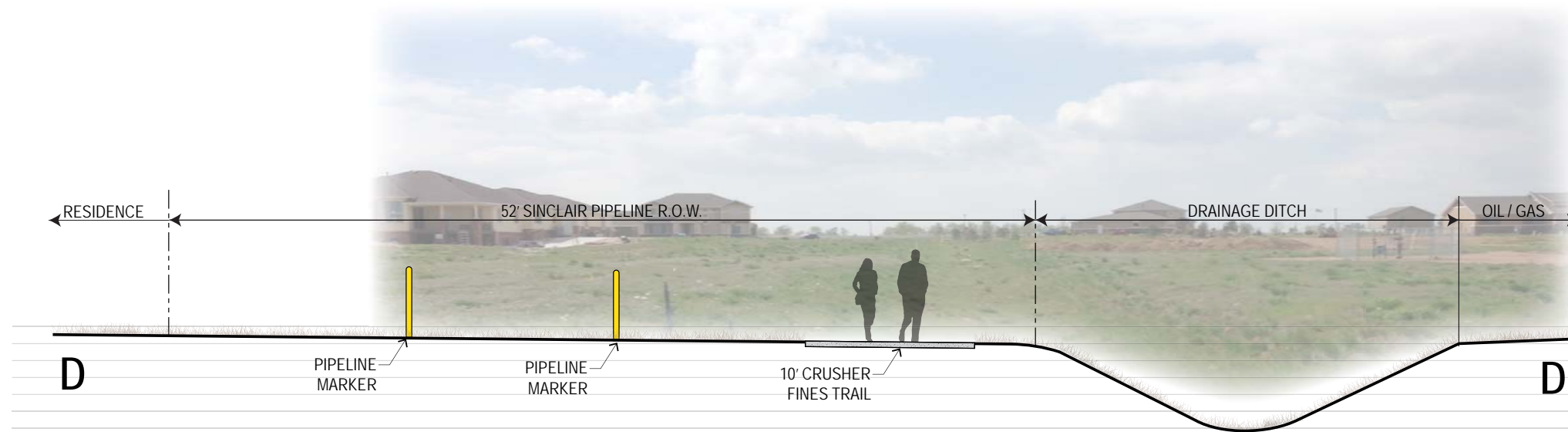
SPLIT RAIL FENCE

C'

EAGLE SHADOW - Trails, Parks, and Open Space Sections
Brighton, CO

October 15, 2015





EAGLE SHADOW - Trails, Parks, and Open Space Sections

Brighton, CO

October 15, 2015